

6 Burton Place, Manchester, Lancashire, M15 4PT  
Tel: 0161 637 8336  
Email: [contactus@ascendproperties.com](mailto:contactus@ascendproperties.com)  
[www.ascendproperties.com](http://www.ascendproperties.com)

# Ascend

Built on higher standards



Local Blackfriars, Crown Street, Salford

£1,150 PCM

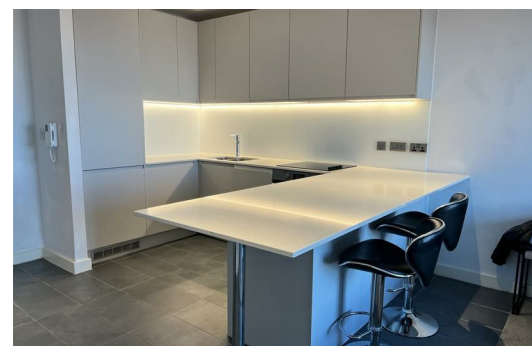
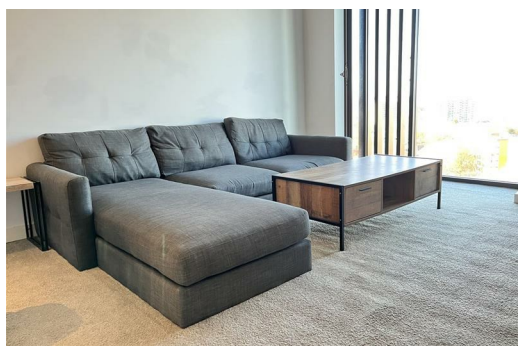
The next level in luxe city living, Local Blackfriars is a gated community comprising 380 apartments, townhouses and penthouses across two striking towers. These are architecturally blended into a Grade II-listed former public house – the Black Friar – which has been re-purposed as a swanky restaurant.

A substantial communal garden space is complemented by second-to-none amenities that include a 24/7 concierge service, bistro, bar, gymnasium, yoga and dance studio, cinema room and fully equipped launderette.

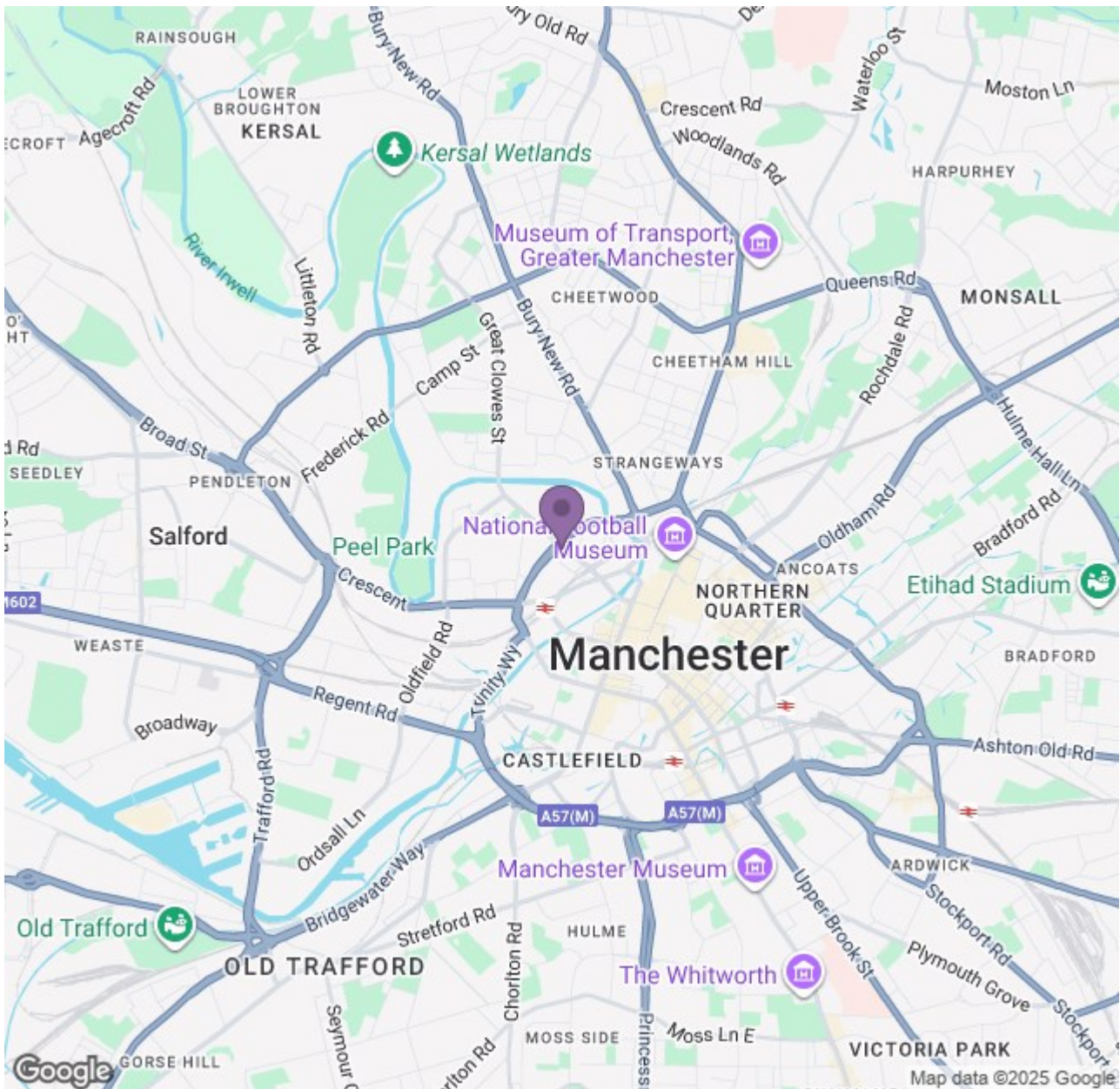
Local Blackfriars' location raises the bar for luxury residential developments. Just five minutes' walk from Manchester's bustling shopping district – Selfridges, Harvey Nichols, the deathlessly hip Northern Quarter – and the glossy nightlife of Deansgate and Spinningfields.

\*Please note: Marketing images have been used for advertising purposes. The images featured are taken of a similar apartment. Fixtures, fittings and furnishings vary.

Available Now  
Deposit: £1,320  
Council Tax Band: C  
12 Month Tenancy







Energy Efficiency Rating			Environmental Impact (CO <sub>2</sub> ) Rating		
Band	Score	Target	Band	Score	Target
A	85	85	A	37	37
B	80	80	B	32	32
C	75	75	C	27	27
D	70	70	D	22	22
E	65	65	E	17	17
F	60	60	F	12	12
G	55	55	G	7	7